

F.M.C. DIALYSIS CENTER

2601 HARLEM AVE.
BERWYN, IL 60402

ARCHITECTURAL WOODWORK SHOP DRAWINGS

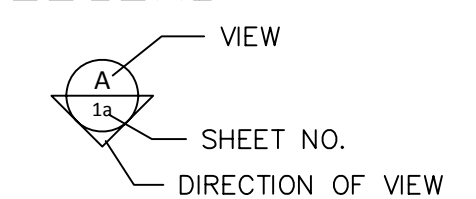
MATERIALS:

- * 45LB.MEDIUM DENSITY PARTICLEBOARD.
- * PL-1: WILSONART #7921-78 "TUCSON WALNUT".
- * SS-1: LG HIMAX #G42 "VENETIAN SAND"
- * CABINET INTERIORS- WHITE MELAMINE
- * LOCKING SUPPORTS FOR WOOD SHELVES: NB-526WH-3/4".
- * CABINET HINGES: BLUM 125°.
- * SLEEVE TYPE CONNECTING SCREWS: KD-555NP.
- * DRAWER SLIDES: KV 8400 SERIES OR EQ..
- * DOOR/ DRAWER PULLS: 4" O.C. BRUSHED ALUMINUM.

DRAWING SCHEDULE:

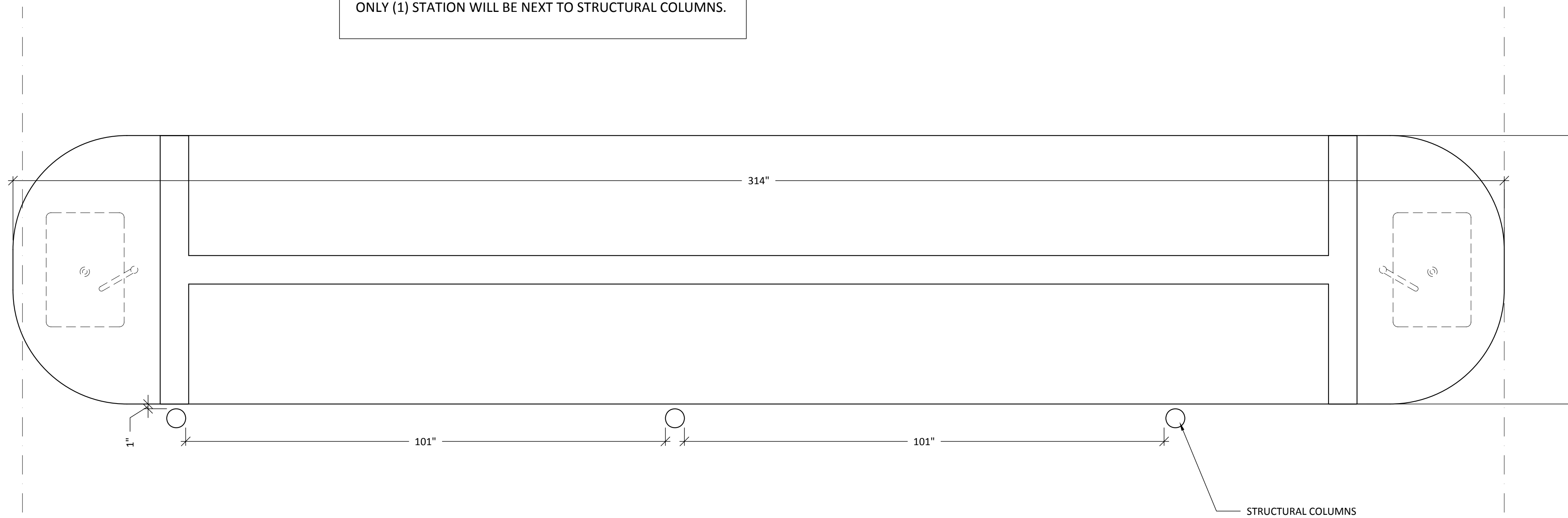
- 0.1 Title Sheet
- 1 Plan View -work stations #1/ #2.
- 2 Plan view -work stations #3/ #4.
- 3 Elevations -work stations #1/ #2.
- 4 Elevations -work stations #3/ #4.
- 5 Section
- 6 Details

LEGEND:

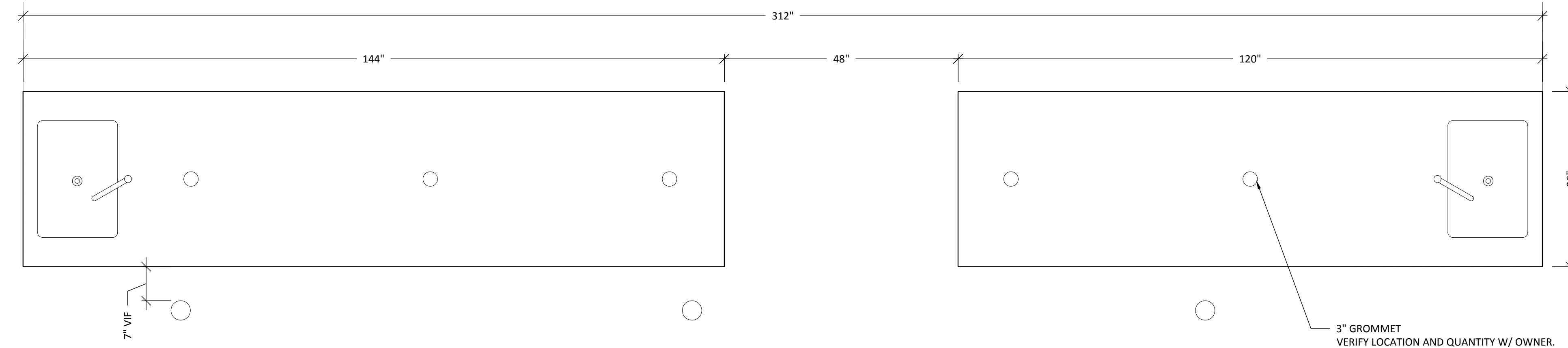


0.1

NOTE:
 (2) NEW WORK STATIONS REQUIRED
 ONLY (1) STATION WILL BE NEXT TO STRUCTURAL COLUMNS.



1 PLAN VIEW -EXISTING UNIT#1 & #2
 Scale: 3/4"=12"



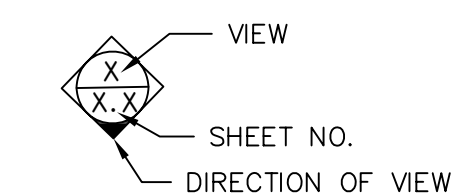
1 PLAN VIEW -UNIT#1 & #2
 Scale: 3/4"=12"

General Notes

SHOP NOTES:

N&N Architectural Drafting Service
 Computer Aided Design & Drafting/ CNC Programming

LEGEND:



Drawn by: Nino K.

No.	Revision/Issue	Date
1	Sink @ each end	2.16.09

DRAWING RECORD

ARCHITECT: WTA ARCHITECTS

Project Name and Address:
F.M.C. DIALYSIS CENTER
 2601 HARLEM AVE.
 BERWYN, IL 60402

Project:
 F.M.C. DIALYSIS CENTER
 Date:
 2.12.2009

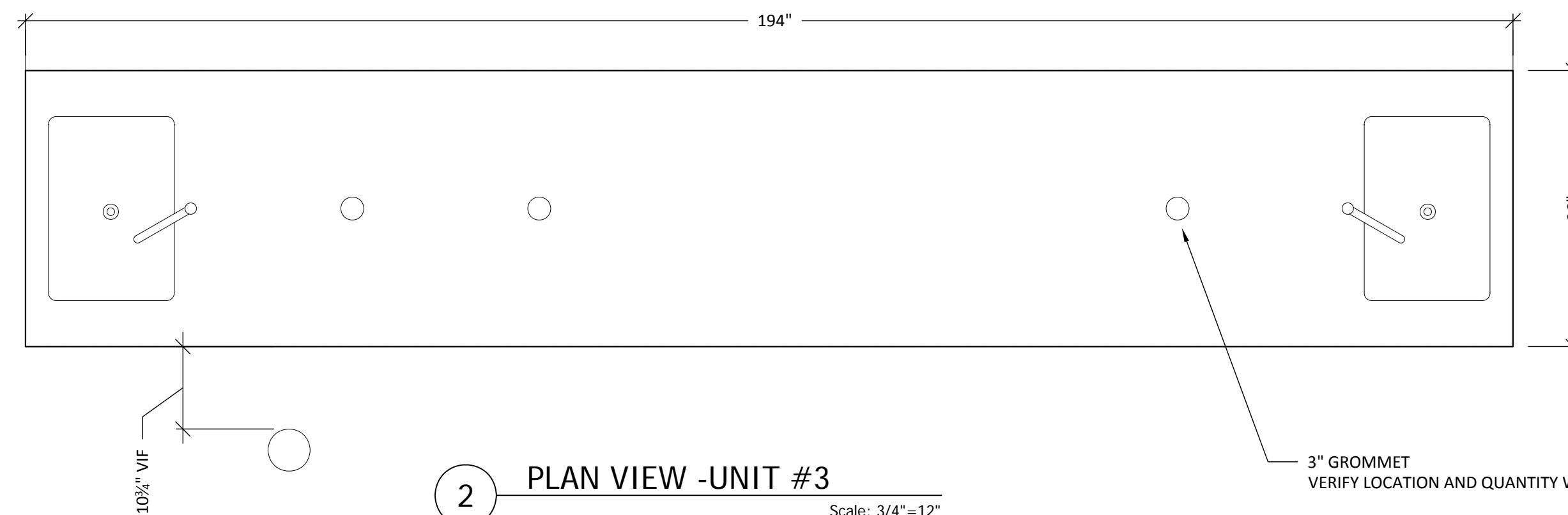
Sheet:

1

NOTE:
 (2) NEW WORK STATIONS REQUIRED
 UNIT #4 NO PLUMBING AND ELECTRICAL

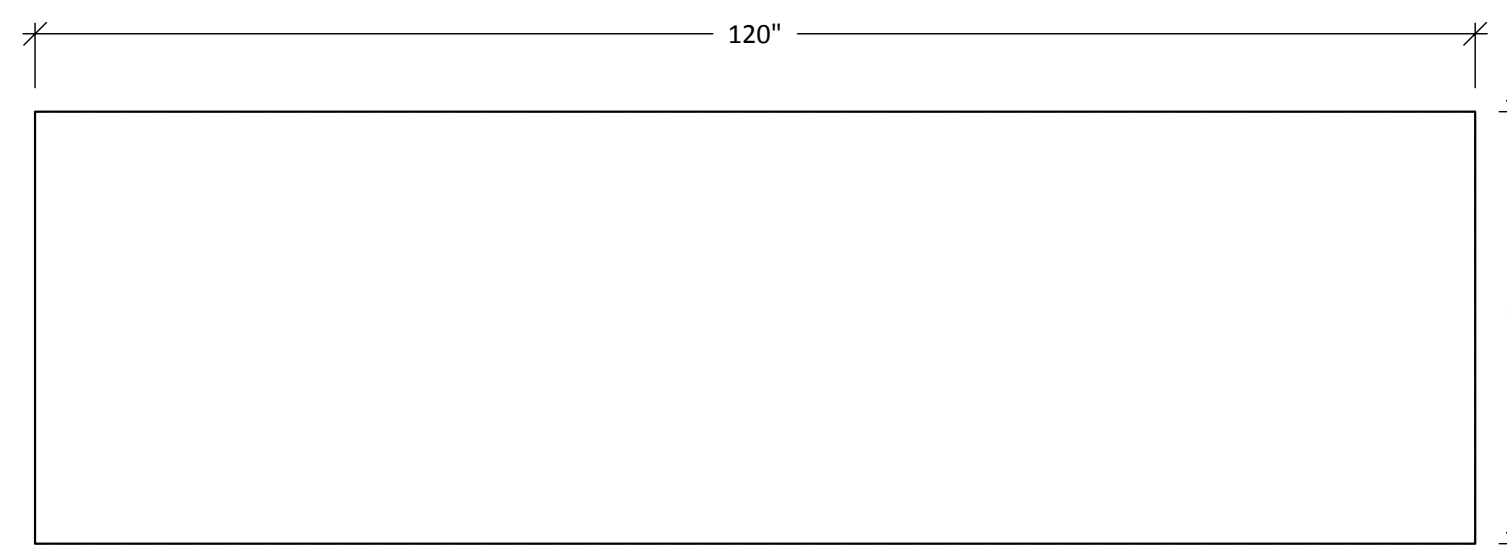


2 PLAN VIEW -EXISTING UNIT #3
 Scale: 3/4"=12"



2 PLAN VIEW -UNIT #3
 Scale: 3/4"=12"

3" GROMMET
 VERIFY LOCATION AND QUANTITY W/ OWNER.



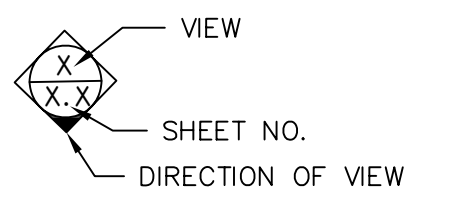
3 PLAN VIEW -UNIT #4
 Scale: 3/4"=12"

General Notes

SHOP NOTES:

N&N Architectural Drafting Service
 Computer Aided Design & Drafting/ CNC Programming

LEGEND:



Drawn by: Neno K.

No.	Revision/Issue	Date
1	Sink @ each end	2.16.09

DRAWING RECORD

ARCHITECT: WTA ARCHITECTS

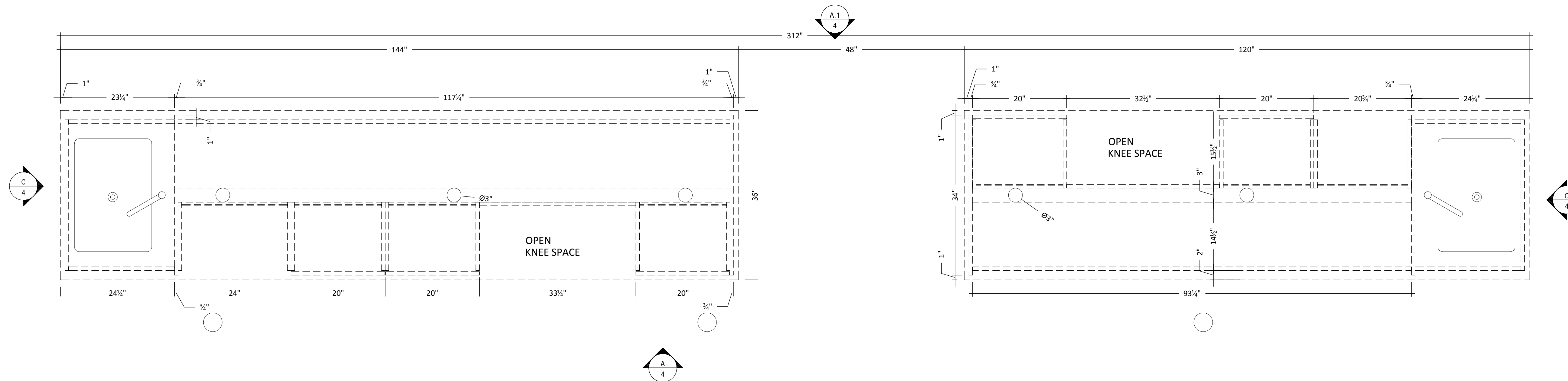
Project Name and Address:
F.M.C. DIALYSIS CENTER
 2601 HARLEM AVE.
 BERWYN, IL 60402

Project:
 F.M.C. DIALYSIS CENTER
 Date:
 2.12.2009

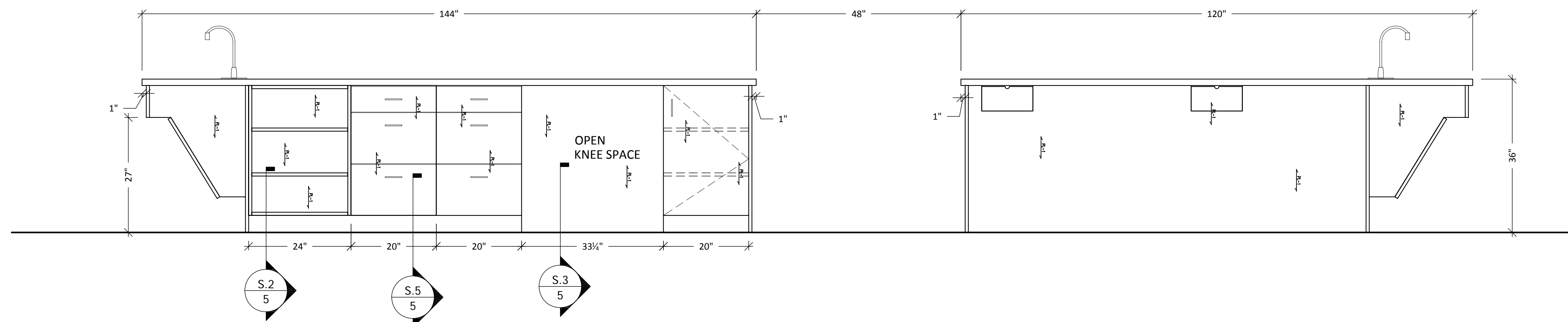
Sheet:

2

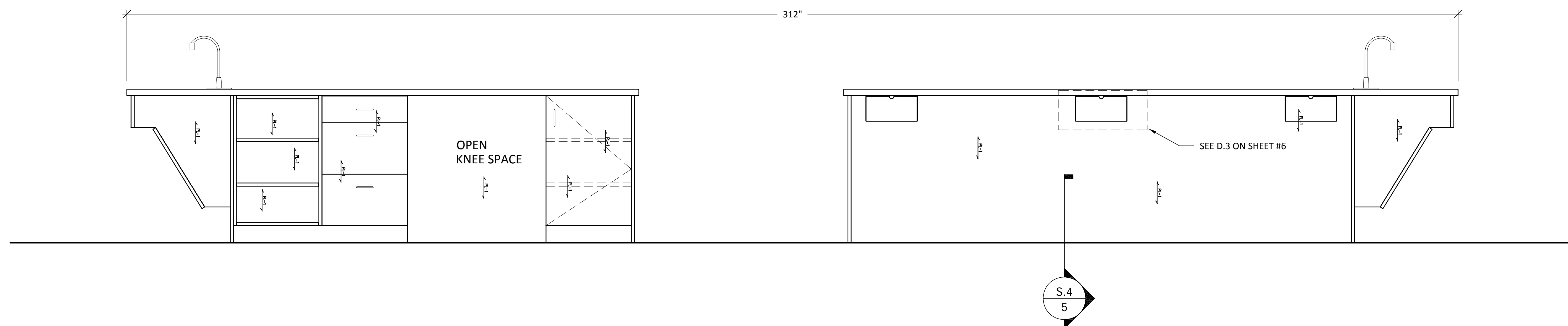
JOB #:



S.7 HORIZONTAL SECTION - UNIT #1 & #2
Scale: 1"=12"



A ELEVATION - UNIT #1 & #2
Scale: 3/4"=12"



A.1 ELEVATION - UNIT #1 & #2
Scale: 3/4"=12"

General Notes

SHOP NOTES:

N&N Architectural Drafting Service
Computer Aided Design & Drafting/ CNC Programming

LEGEND:

 VIEW
 SHEET NO.
 DIRECTION OF VIEW

Drawn by: Neno K.

No.	Revision/Issue	Date
1	Sink @ each end	2.16.09

DRAWING RECORD

ARCHITECT: WTA ARCHITECTS

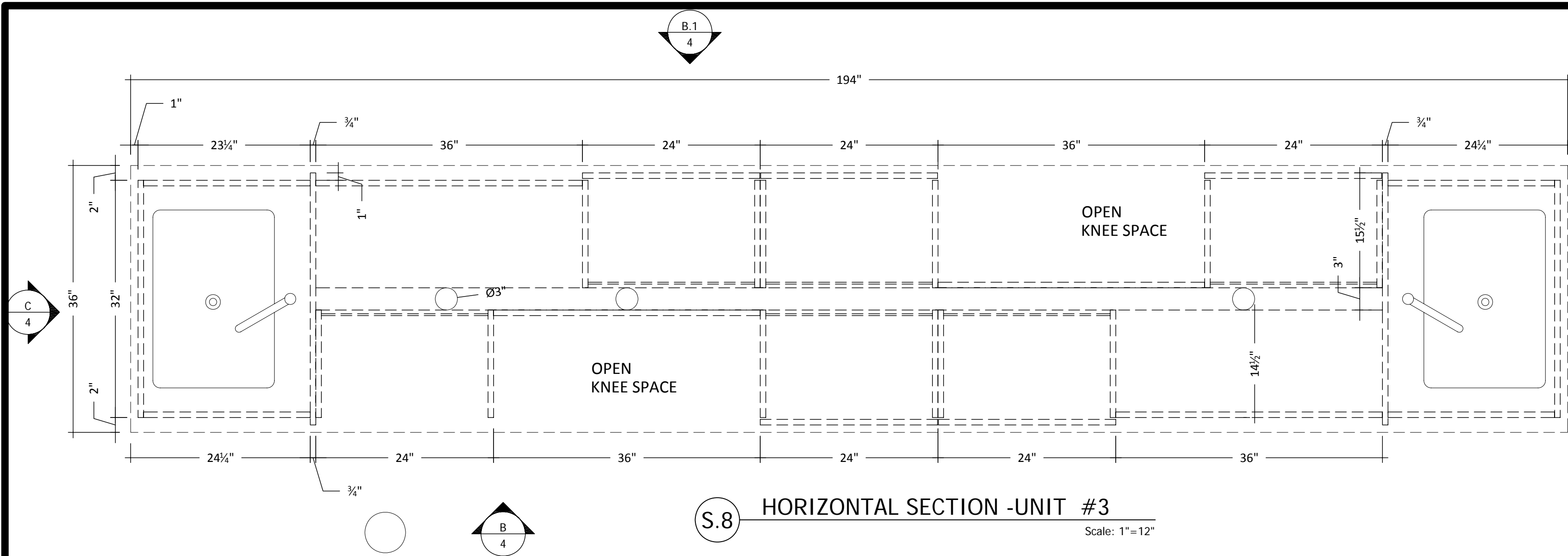
Project Name and Address:
F.M.C. DIALYSIS CENTER
 2601 HARLEM AVE.
 BERWYN, IL 60402

Project: F.M.C. DIALYSIS CENTER
 Date: 2.12.2009

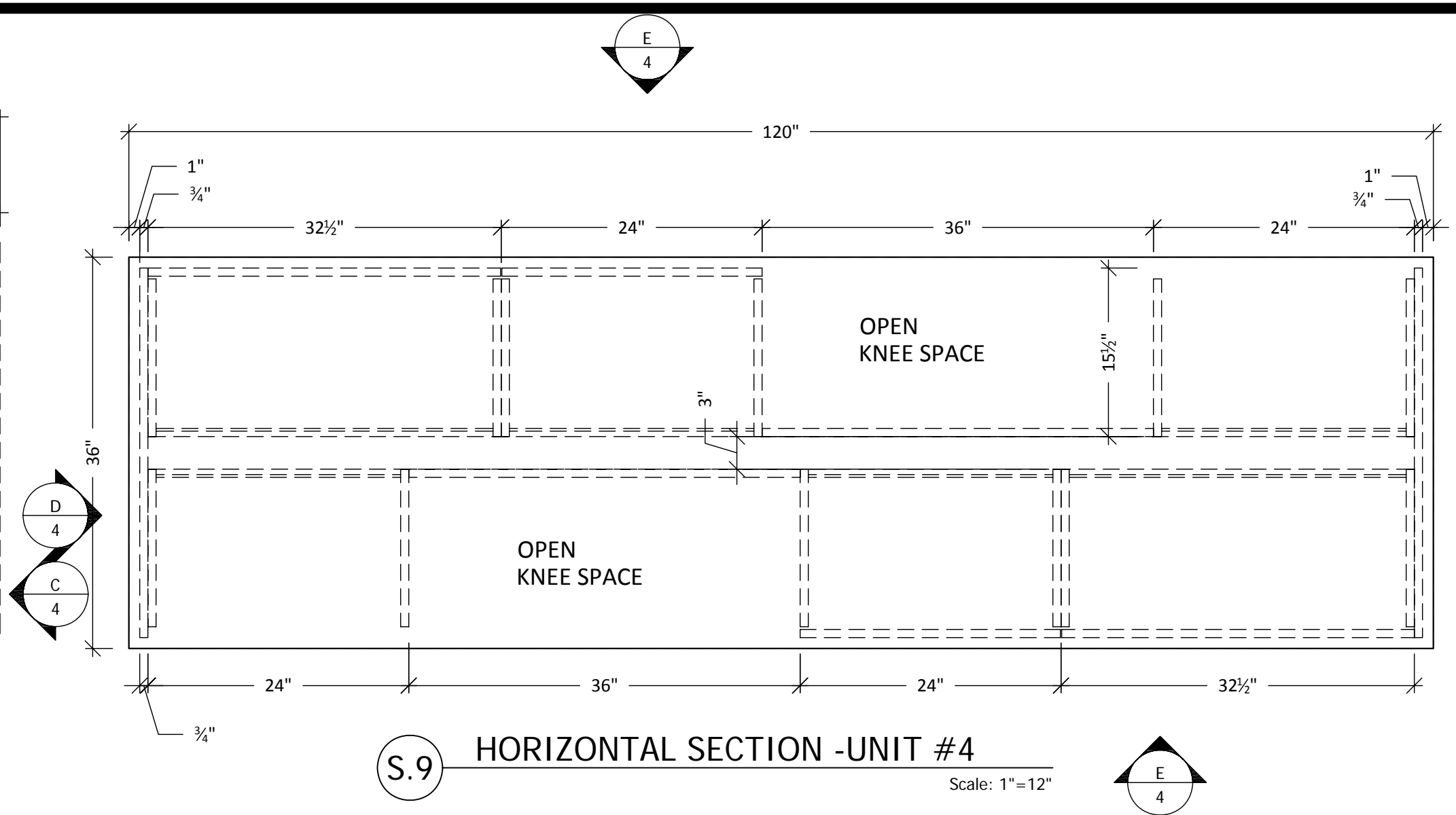
Sheet:

3

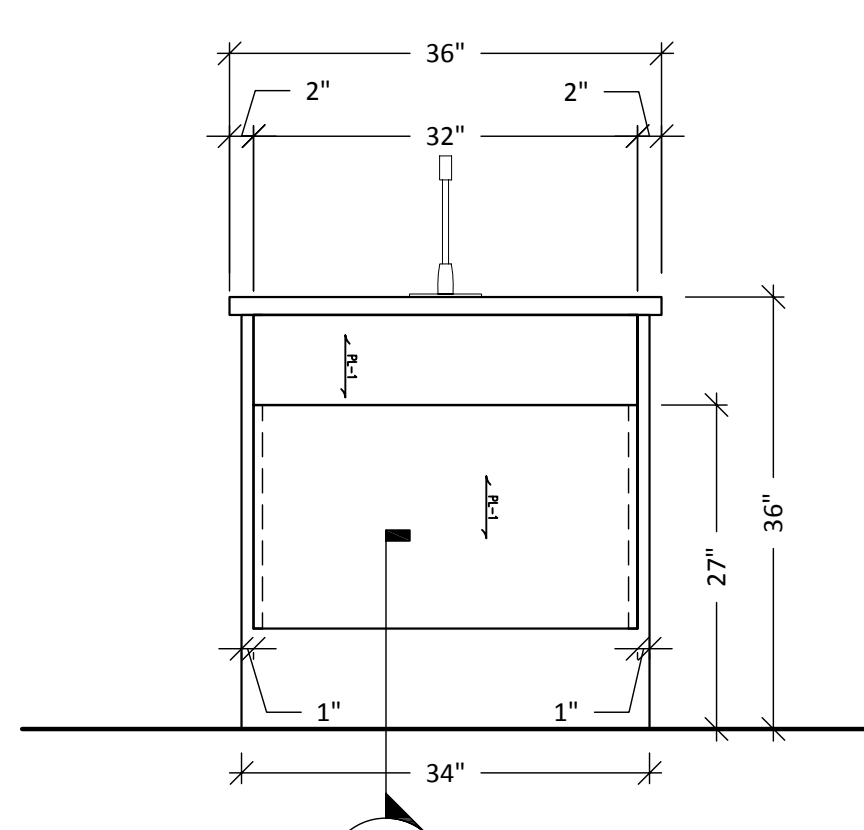
JOB #:



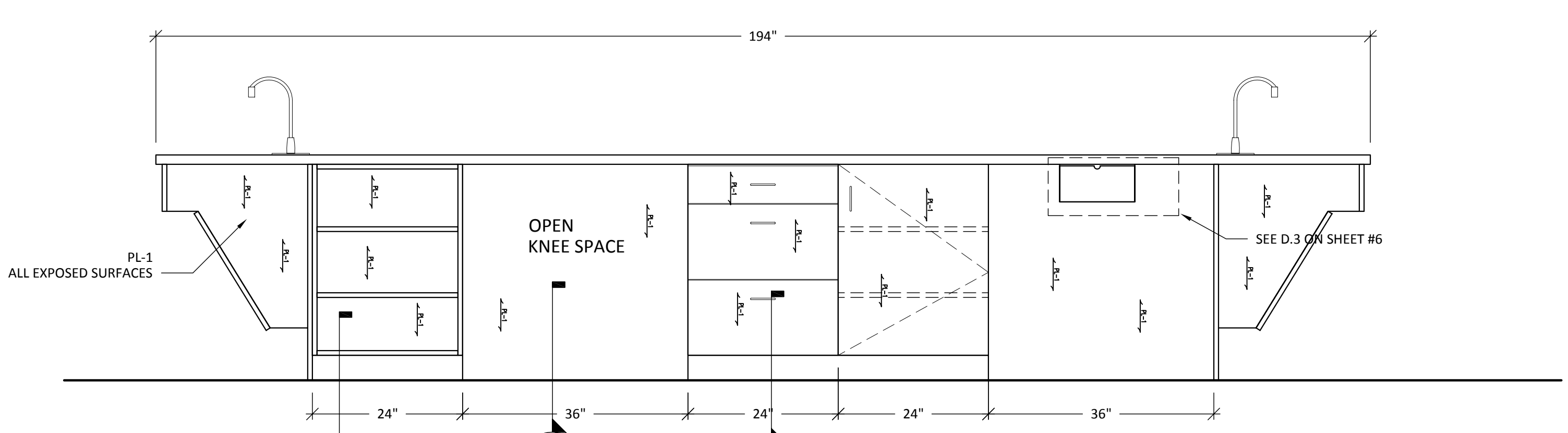
S.8 HORIZONTAL SECTION - UNIT #3
Scale: 1"=12"



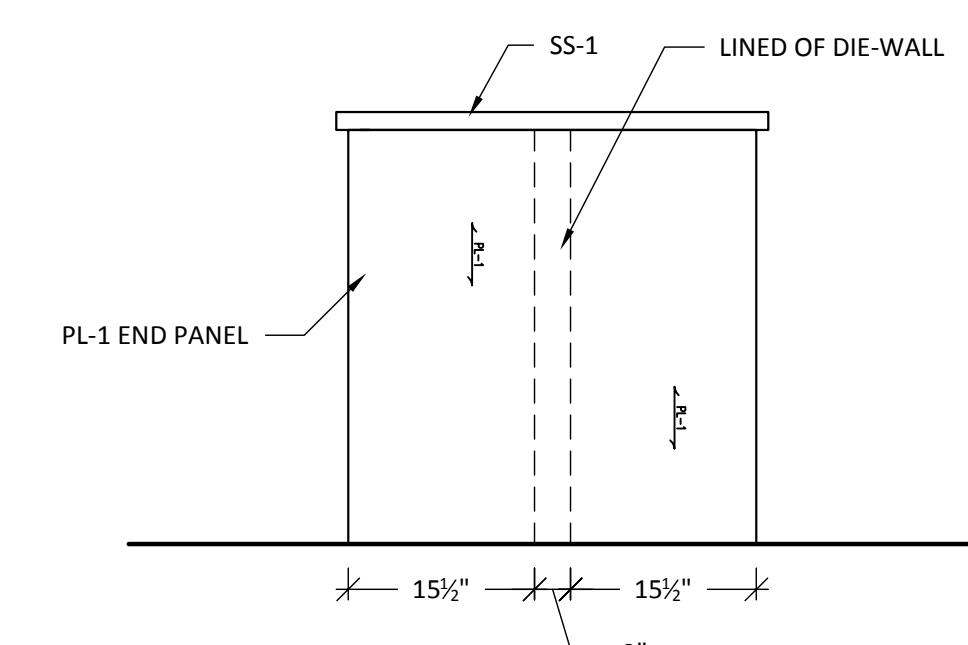
S.9 HORIZONTAL SECTION - UNIT #4
Scale: 1"=12"



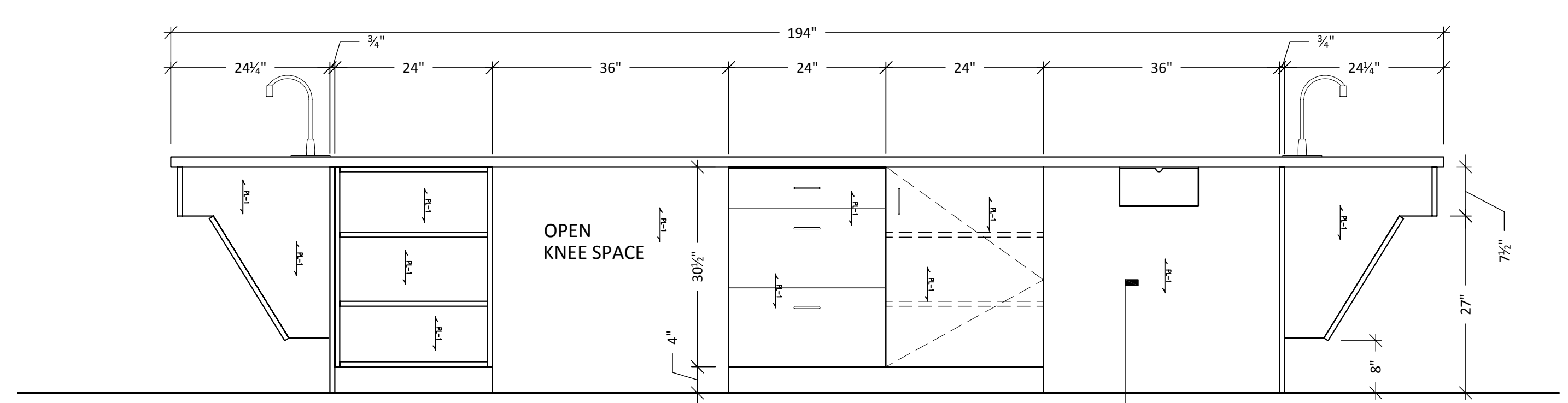
C ELEVATION - SINK
Scale: 3/4"=12"



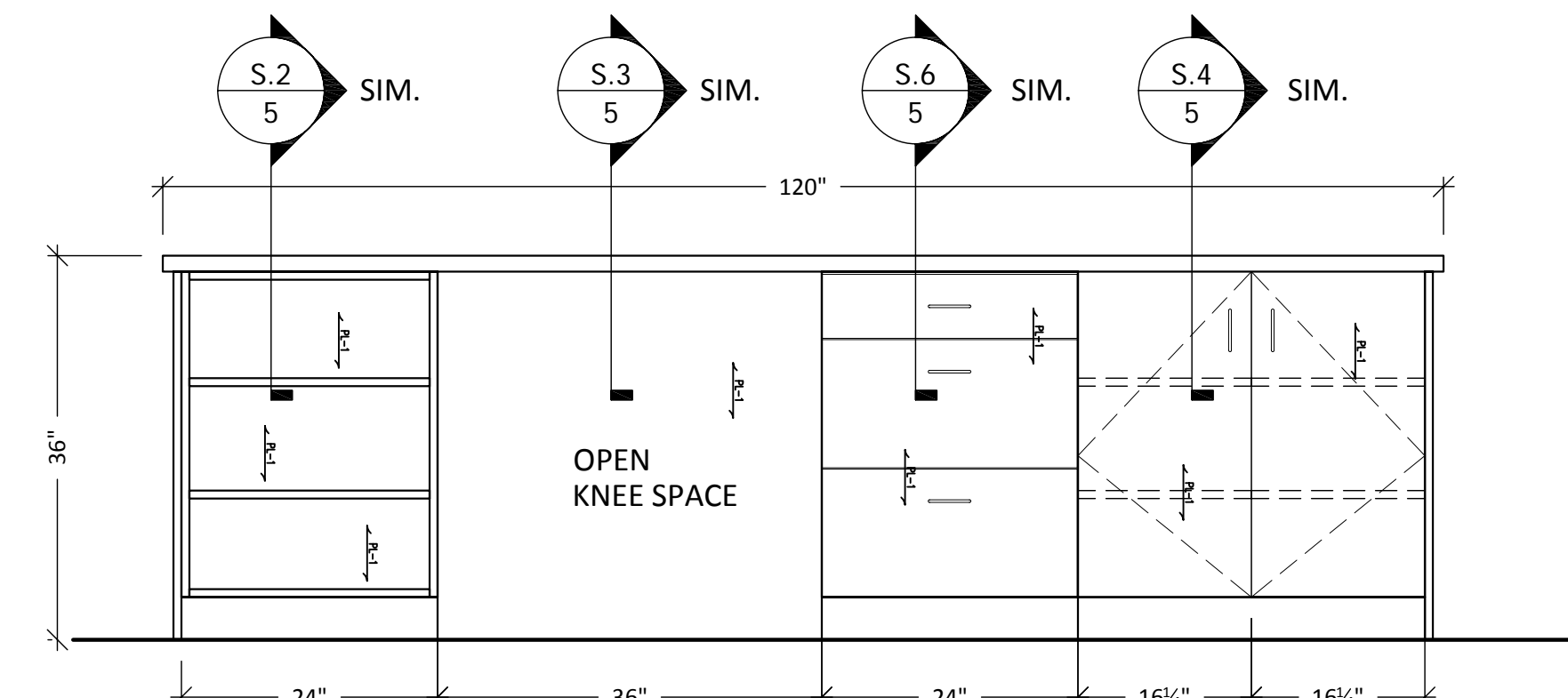
B ELEVATION - UNIT #3
Scale: 3/4"=12"



D ELEVATION - FINISH END PANEL
Scale: 3/4"=12"



B.1 ELEVATION - UNIT #3
Scale: 3/4"=12"



E ELEVATION - UNIT #4
Scale: 3/4"=12"

General Notes
SHOP NOTES:

N&N Architectural Drafting Service
Computer Aided Design & Drafting/ CNC Programming

LEGEND:
VIEW
SHEET NO.
DIRECTION OF VIEW

Drawn by: Neno K.

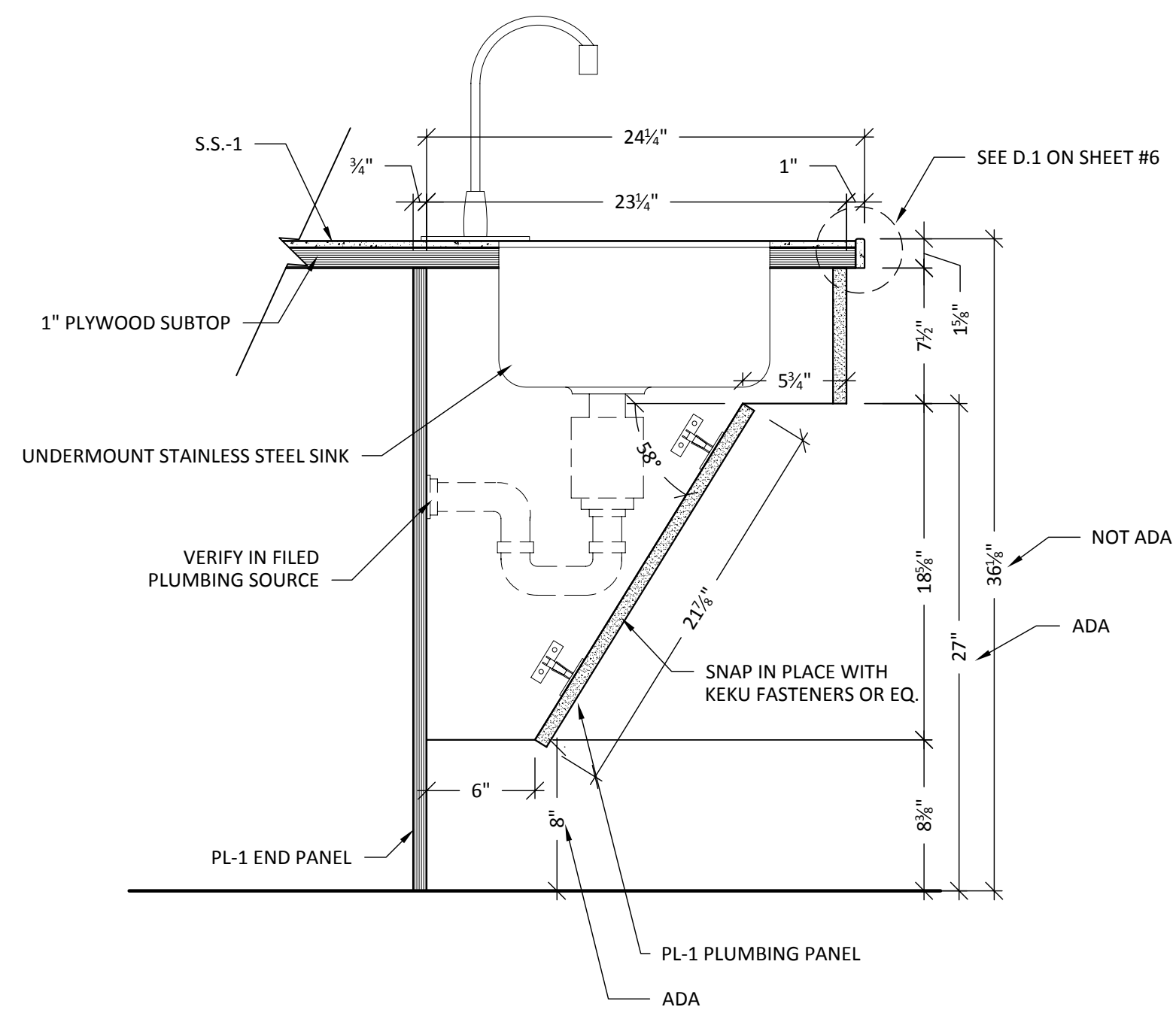
No.	Revision/Issue	Date
1	Sink @ each end	2.16.09

DRAWING RECORD

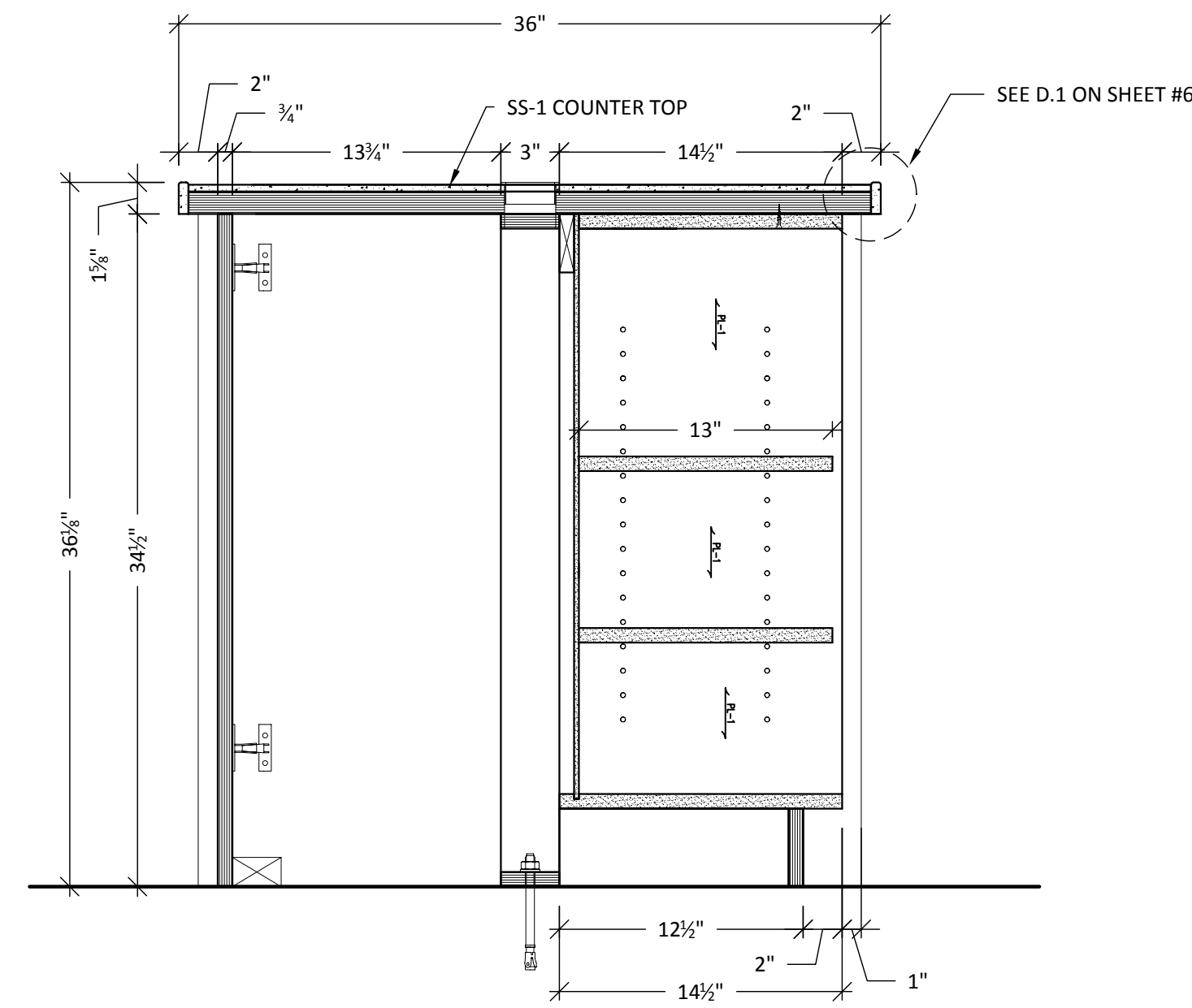
ARCHITECT: WTA ARCHITECTS

Project Name and Address:
F.M.C. DIALYSIS CENTER
2601 HARLEM AVE.
BERWYN, IL 60402

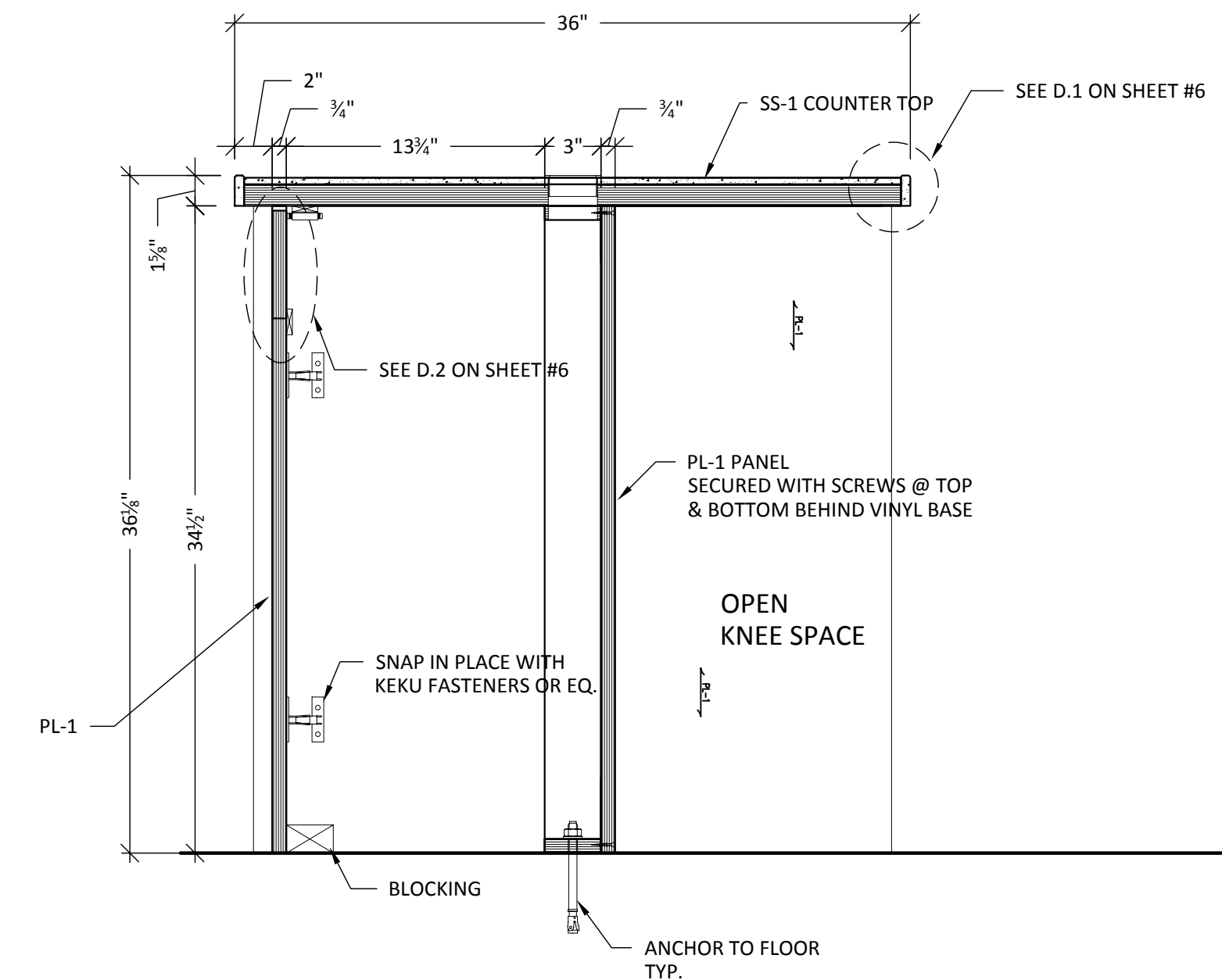
Project: F.M.C. DIALYSIS CENTER
Date: 2.12.2009
JOB #:
Sheet: **4**



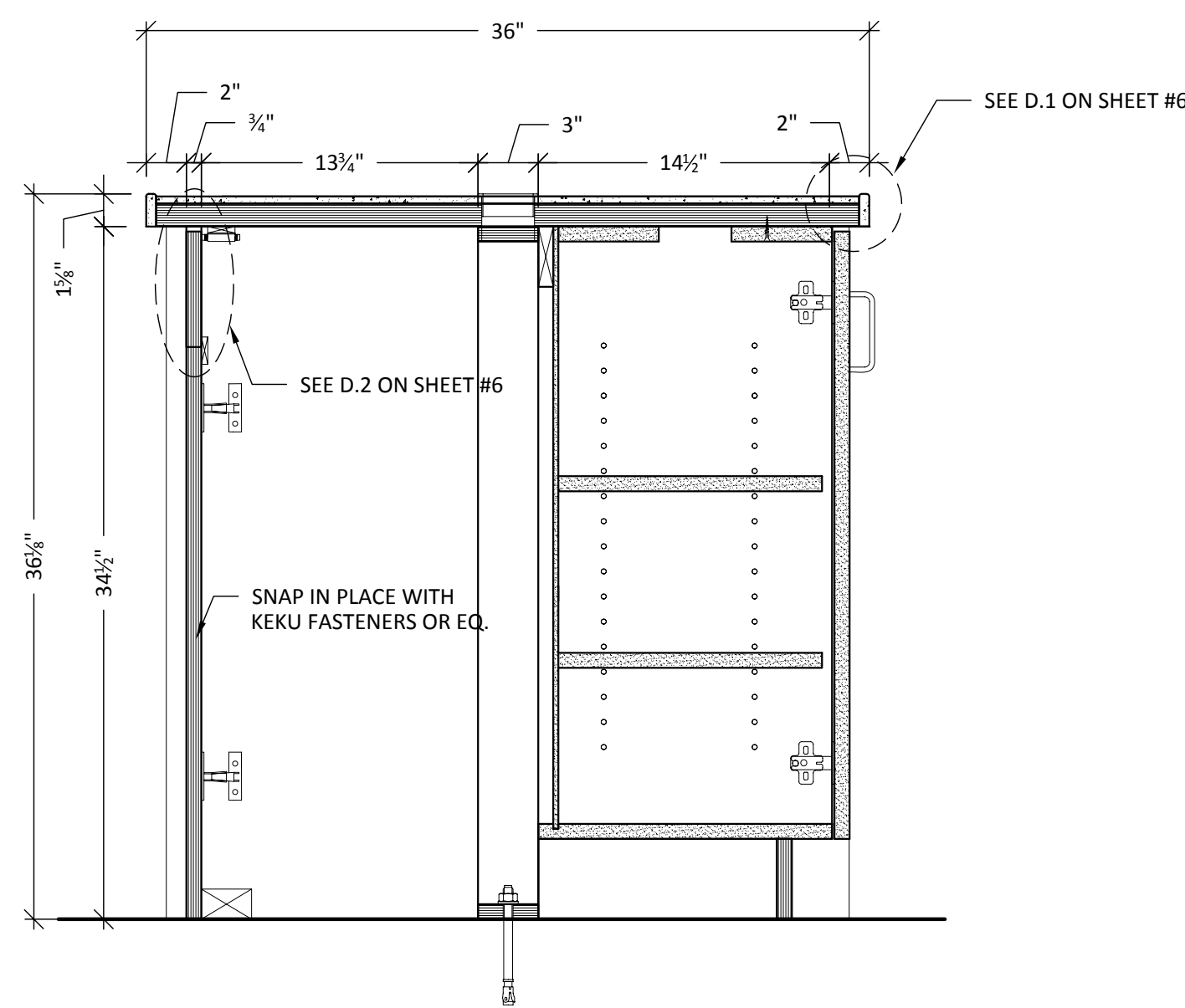
S.1 SECTION - SINK CABINET
Scale: 1 1/2" = 12"



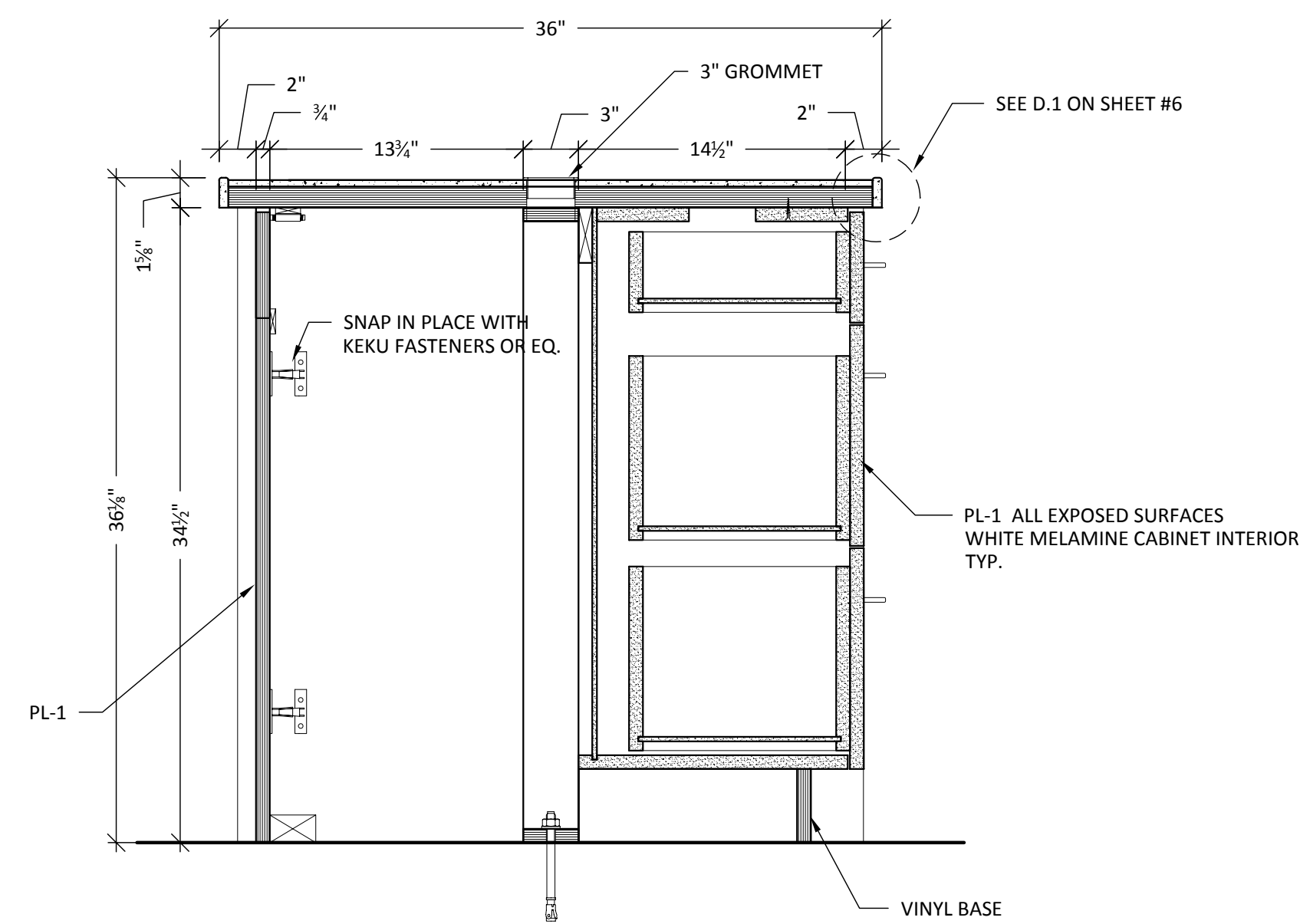
S.2 SECTION - OPEN SHELF CABINET
Scale: 1 1/2" = 12"



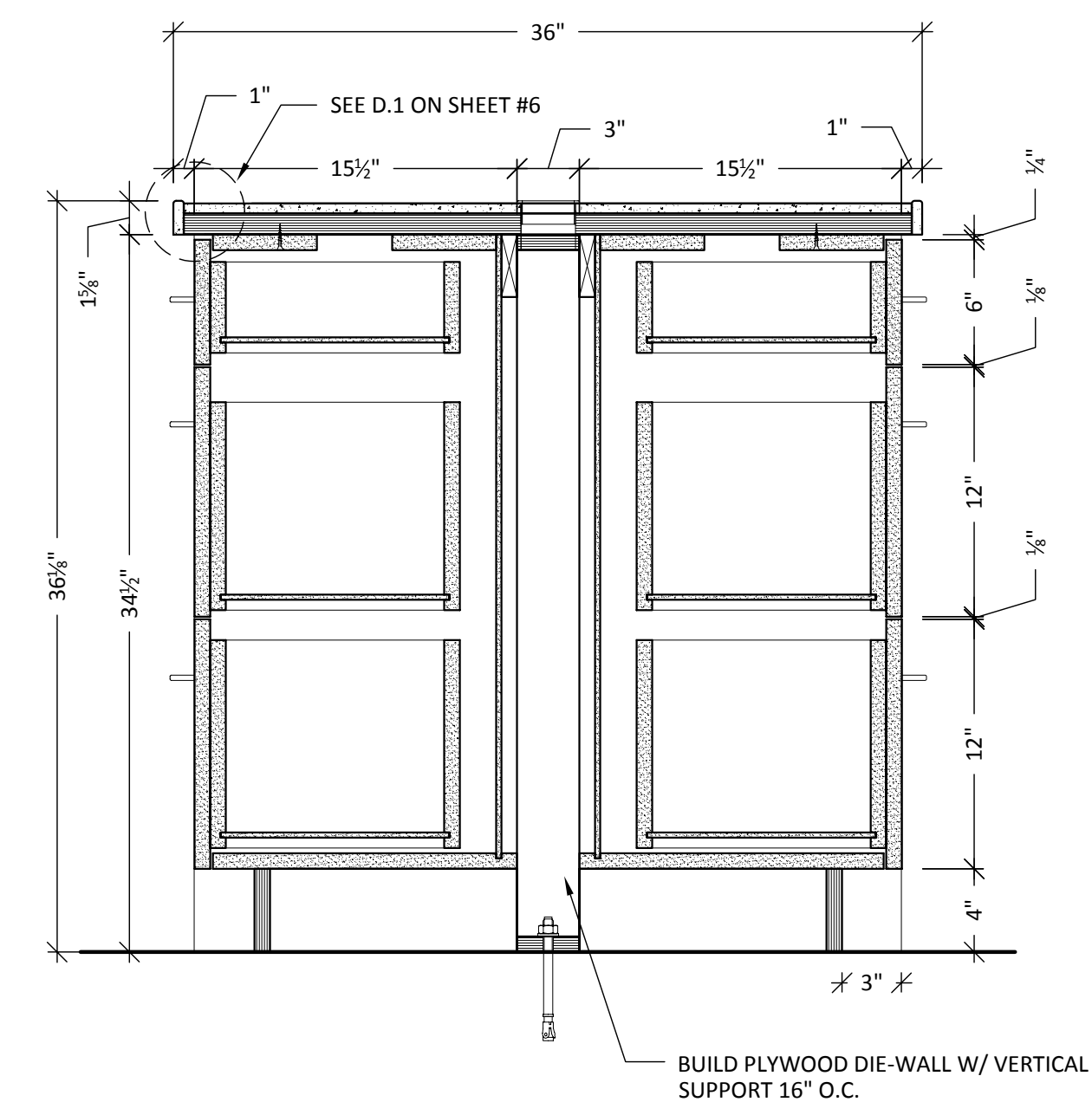
S.3 SECTION - KNEE SPACE
Scale: 1 1/2" = 12"



S.4 SECTION - SHELF CABINET
Scale: 1 1/2" = 12"



S.5 SECTION - DRAWER CABINET
Scale: 1 1/2" = 12"



S.6 SECTION - CABINET BACK TO BACK
Scale: 1 1/2" = 12"

General Notes

SHOP NOTES:

N&N Architectural Drafting Service
Computer Aided Design & Drafting/ CNC Programming

LEGEND:

 VIEW
 SHEET NO.
 DIRECTION OF VIEW

Drawn by: Neno K.

No.	Revision/Issue	Date

DRAWING RECORD

ARCHITECT:
WTA ARCHITECTS

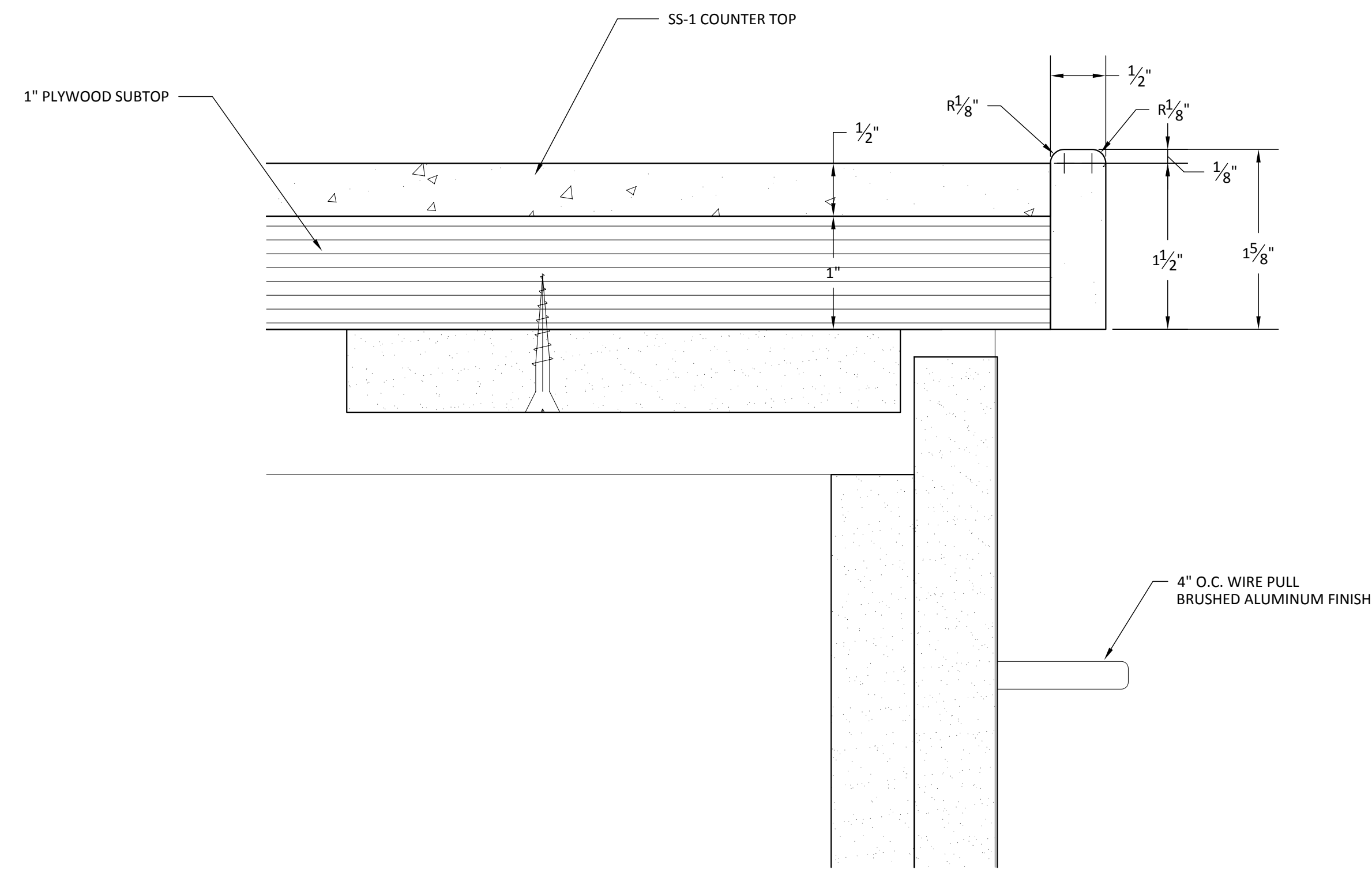
Project Name and Address:
F.M.C. DIALYSIS CENTER
2601 HARLEM AVE.
BERWYN, IL 60402

Project:
F.M.C. DIALYSIS CENTER
Date:
2.12.2009

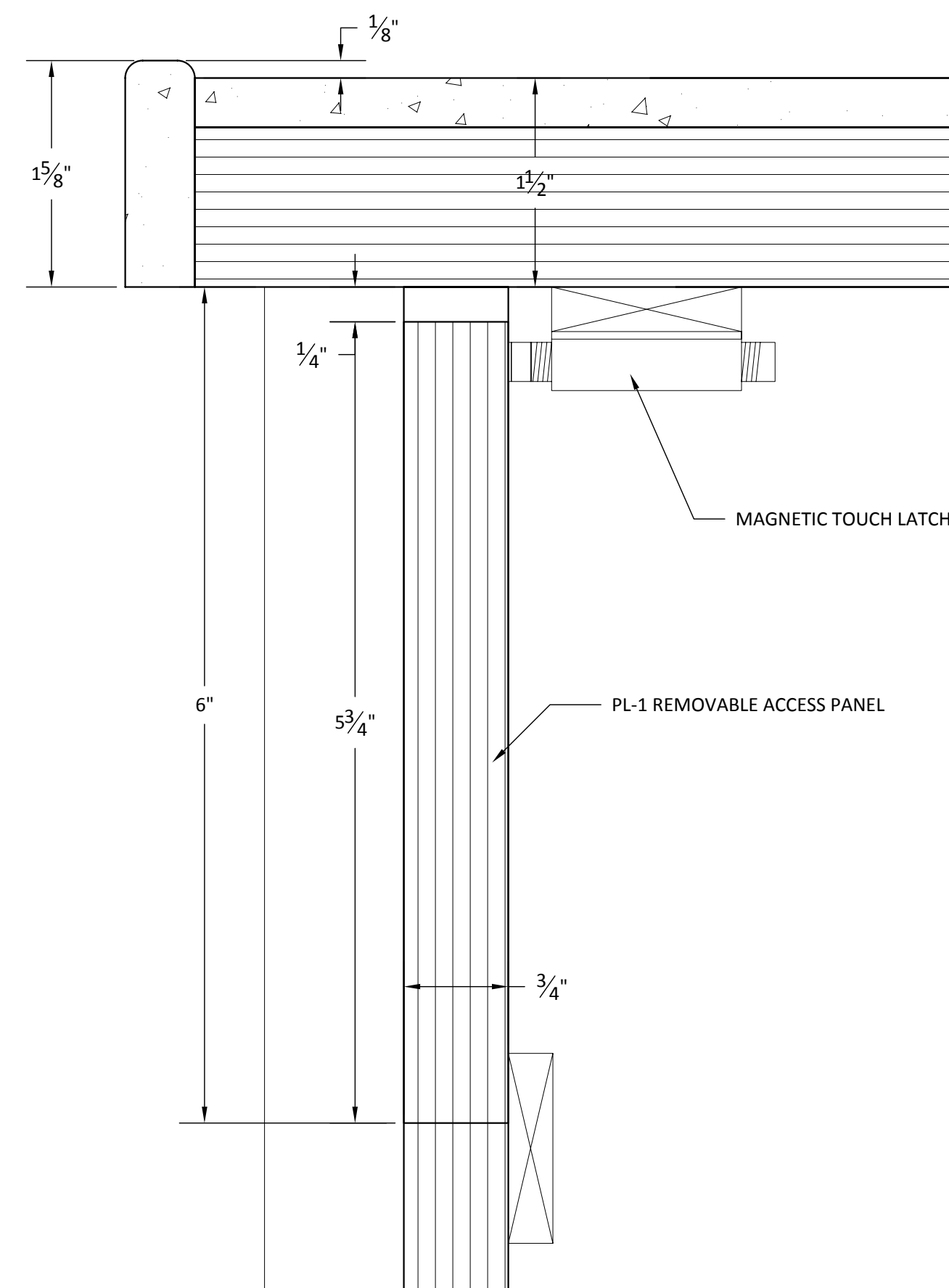
Sheet:

5

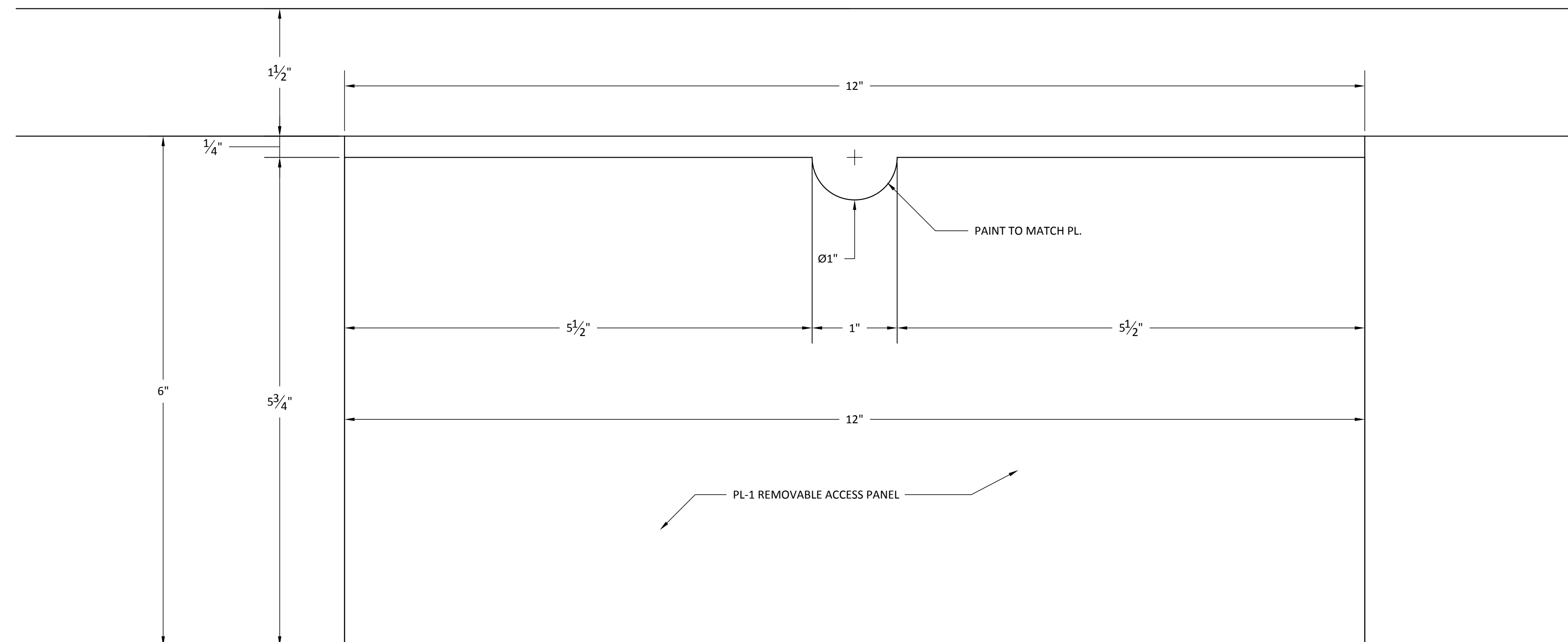
JOB #:



D.1 DETAIL- COUNTER TOP EDGE
Scale: FULL SCALE



D.2 DETAIL -REMOVABLE ACCESS PANEL
Scale: FULL SCALE



D.3 DETAIL -REMOVABLE ACCESS PANEL
Scale: FULL SCALE

General Notes

SHOP NOTES:

N&N Architectural Drafting Service
Computer Aided Design & Drafting/ CNC Programming

LEGEND:

 VIEW
 SHEET NO.
 DIRECTION OF VIEW

Drawn by: Neno K.

No.	Revision/Issue	Date

DRAWING RECORD

ARCHITECT:
WTA ARCHITECTS

Project Name and Address:
F.M.C. DIALYSIS CENTER
2601 HARLEM AVE.
BERWYN, IL 60402

Project:
F.M.C. DIALYSIS CENTER
Date:
2.12.2009

Sheet:
6

JOB #: